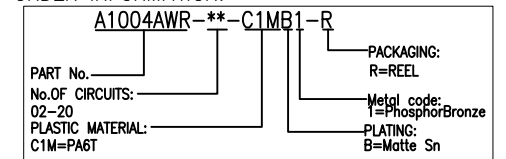


PCB LAYOUT(Tolerance:±0.05)

REV	DESCRIPTION	DESIGN	DATE
A0	NEW RELEASE	Steven	2019/05/09

Specifications:
 Poles: 02 to 20
 Contact resistance: ≤20mΩ
 Insulation resistance: ≥100MΩ
 Rated voltage: 125V AC DC
 Rated current: 1.0A AC DC
 Withstand Voltage: 500V AC/minute
 Temperature Range: -25°C ~ +85°C
 Housing: PA6T UL94V-0, Natural
 Contacts: PhosphorBronze/Matte Sn-plated
 Solder Tabs: Brass/Matte Sn-plated

ORDER INFORMATION:



孔位	尺寸	A	B	C	孔位	尺寸	A	B	C
2P		1.00	2.50	3.50	12P		11.00	12.5	13.5
3P		2.00	3.50	4.50	*13P		12.00	13.5	14.5
4P		3.00	4.50	5.50	*14P		13.00	14.5	15.5
5P		4.00	5.50	6.50	*15P		14.00	15.5	16.5
6P		5.00	6.50	7.50	*16P		15.00	16.5	17.5
7P		6.00	7.50	8.50	*17P		16.00	17.5	18.5
8P		7.00	8.50	9.50	*18P		17.00	18.5	19.5
9P		8.00	9.50	10.5	*19P		18.00	19.5	20.5
10P		9.00	10.50	11.5	*20P		19.00	20.5	21.5
*11P		10.00	11.50	12.5					

JKUN 温州健坤接插件有限公司 WENZHOU JKUN CONNECTOR CO.,LTD.		TITLE: 1.0 Pitch Wafer 90° SMT	
GENERAL TOLERANCE		USE: CUSTOMER	PART NO.:
X. ±0.50	X. ±5°	APPD: Wangliang	A1004AWR-**-C1MB1-R
X.X ±0.30	X.X ±2°	CHKD: Liuzhengling	DWG NO.:
X.XX ±0.20	X.XX ±1°	DR: Steven	JKUN-GCCP-0819
UNITS: mm		SCALE 1 : 1	SHEET 1 / 1