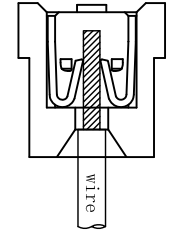
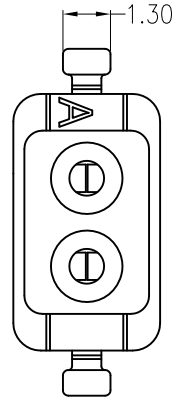
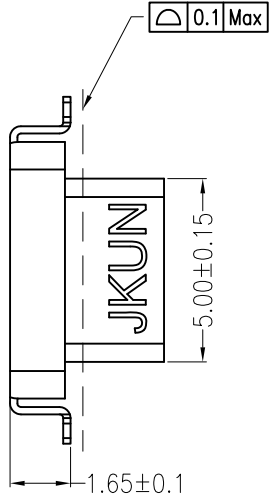
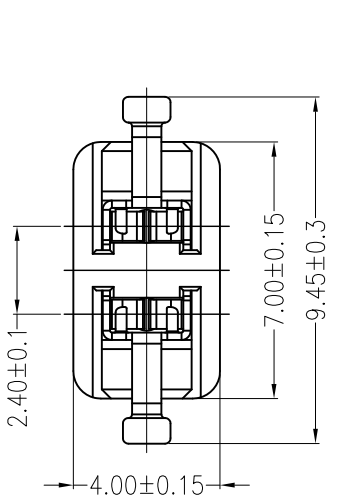
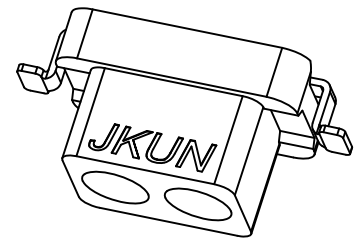


| REV | DESCRIPTION | DESIGN | DATE       |
|-----|-------------|--------|------------|
| A0  | NEW RELEASE | 蒋建银    | 2019/11/13 |



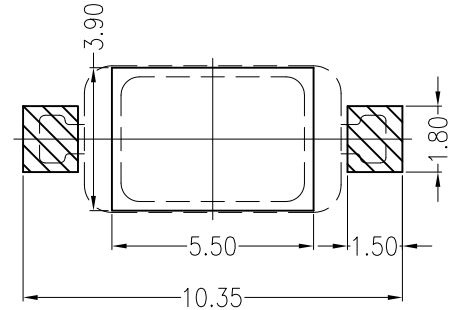
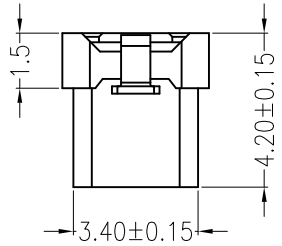
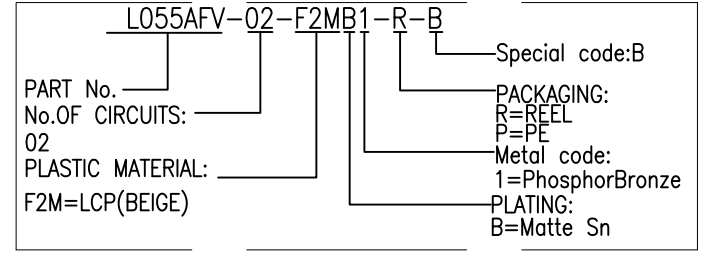
Assembly Layout



**Specifications:**

- Contact resistance:  $\leq 20m\Omega$
- Insulation resistance:  $\geq 1000M\Omega$
- Rated voltage: 275V AC DC
- Rated current: 1.0A AC DC
- Withstand Voltage: 1500V AC/minute
- Temperature Range:  $-40^{\circ}C \sim +120^{\circ}C$
- Housing: LCP UL94V-0, Natural (Beige)
- Contacts: Phosphor Bronze/Matte Sn-plated

**ORDER INFORMATION:**



Board Layout  
General Tolerance:  $\pm 0.05$

|                                                            |                      |                                         |                      |
|------------------------------------------------------------|----------------------|-----------------------------------------|----------------------|
| <b>JKUN</b> 温州健坤接插件有限公司<br>WENZHOU JKUN CONNECTOR CO.,LTD. |                      | TITLE:<br>2.5mmPITCH 180°WAFER SMT TYPE |                      |
| GENERAL TOLERANCE                                          |                      | USE:<br>CUSTOMER                        | PART NO.:            |
| X. $\pm 0.50$                                              | X. $\pm 5^{\circ}$   | APPD:<br>刘振岭                            | L055AFV-02-F2MB1-R-B |
| X.X $\pm 0.30$                                             | X.X $\pm 2^{\circ}$  | CHKD:<br>王亮                             | DWG NO.:             |
| X.XX $\pm 0.20$                                            | X.XX $\pm 1^{\circ}$ | DR:<br>蒋建银                              | JKUN-GCKH-1488       |
| UNITS:<br>mm                                               |                      | SCALE<br>1 : 1                          | SHEET<br>1 / 1       |