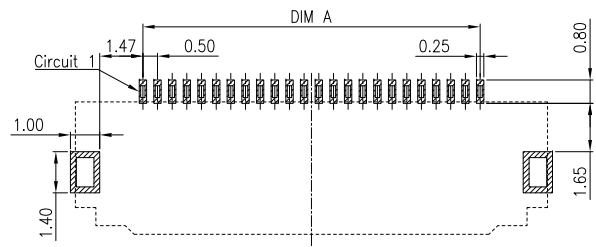
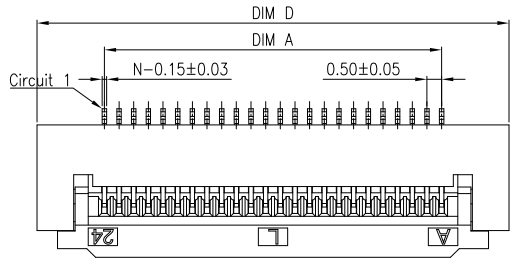
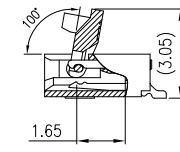
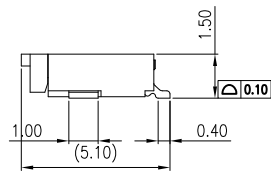
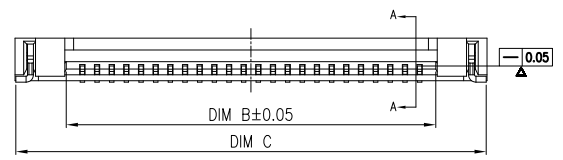
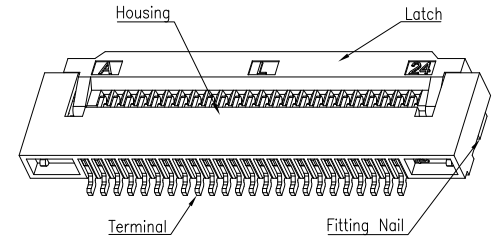


REV	DESCRIPTION	DESIGN	DATE
A	NEW RELEASE	Ryan	2021/09/07

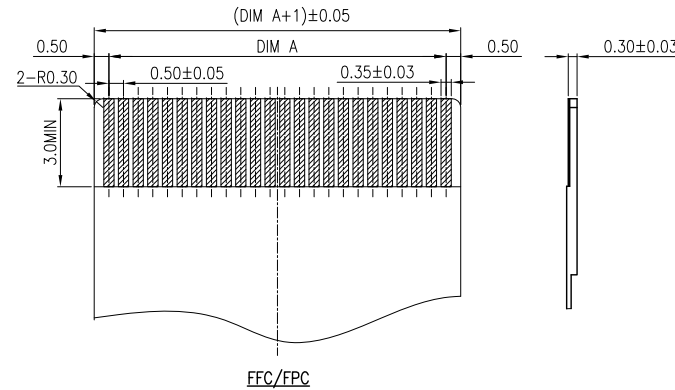
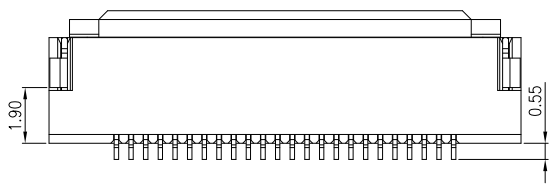


PCB layout



SECTION A-A
SCALE 1:1

CKT	DIM A	DIM B	DIM C	DIM D	CKT	DIM A	DIM B	DIM C	DIM D
4	1.50	2.60	6.05	6.10	33	16.00	17.10	20.55	20.60
5	2.00	3.10	6.55	6.60	34	16.50	17.60	21.05	21.10
6	2.50	3.60	7.05	7.10	35	17.00	18.10	21.55	21.60
7	3.00	4.10	7.55	7.60	36	17.50	18.60	22.05	22.10
8	3.50	4.60	8.05	8.10	37	18.00	19.10	22.55	22.60
9	4.00	5.10	8.55	8.60	38	18.50	19.60	23.05	23.10
10	4.50	5.60	9.05	9.10	39	19.00	20.10	23.55	23.60
11	5.00	6.10	9.55	9.60	40	19.50	20.60	24.05	24.10
12	5.50	6.60	10.05	10.10	41	20.00	21.10	24.55	24.60
13	6.00	7.10	10.55	10.60	42	20.50	21.60	25.05	25.10
14	6.50	7.60	11.05	11.10	43	21.00	22.10	25.55	25.60
15	7.00	8.10	11.55	11.60	44	21.50	22.60	26.05	26.10
16	7.50	8.60	12.05	12.10	45	22.00	23.10	26.55	26.60
17	8.00	9.10	12.55	12.60	46	22.50	23.60	27.05	27.10
18	8.50	9.60	13.05	13.10	47	23.00	24.10	27.55	27.60
19	9.00	10.10	13.55	13.60	48	23.50	24.60	28.05	28.10
20	9.50	10.60	14.05	14.10	49	24.00	25.10	28.55	28.60
21	10.00	11.10	14.55	14.60	50	24.50	25.60	29.05	29.10
22	10.50	11.60	15.05	15.10	51	25.00	26.10	29.55	29.60
23	11.00	12.10	15.55	15.60	52	25.50	26.60	30.05	30.10
24	11.50	12.60	16.05	16.10	53	26.00	27.10	30.55	30.60
25	12.00	13.10	16.55	16.60	54	26.50	27.60	31.05	31.10
26	12.50	13.60	17.05	17.10	55	27.00	28.10	31.55	31.60
27	13.00	14.10	17.55	17.60	56	27.50	28.60	32.05	32.10
28	13.50	14.60	18.05	18.10	57	28.00	29.10	32.55	32.60
29	14.00	15.10	18.55	18.60	58	28.50	29.60	33.05	33.10
30	14.50	15.60	19.05	19.10	59	29.00	30.10	33.55	33.60
31	15.00	16.10	19.55	19.60	60	29.50	30.60	34.05	34.10
32	15.50	16.60	20.05	20.10					



FPC/FPC

Specifications:
Housing:High temperature plastic UL94V-0;Color:natural
Latch:High temperature plastic UL94V-0;Color:black
Terminal:Copper alloy, Matte Tin/Gold
Fitting Nail:Copper alloy, Matte Tin
Product must comply HF RoHS specification
Contact resistance:≤30mΩ
Insulation resistance:≥500MΩ
Rated voltage:50V AC/DC
Rated current:0.5A AC/DC
Withstand Voltage:500V AC/minute
Temperature Range:-25°C~+85°C

ORDER INFORMATION:

PART No.	F0506AWR-**-F4M*1-*	PACKAGING:	R=REEL G=TUBE
No.OF CIRCUITS:	4~60	Metal code:	1=Phosphor Bronze
PLASTIC MATERIAL:	F4M=LCP(Natural)	PLATING:	B=Matte Tin C=Gold

JKUN 温州健坤接插件有限公司
WENZHOU JKUN CONNECTOR CO.,LTD.

GENERAL TOLERANCE	
X.X ±0.15	X. ±5'
X.XX ±0.10	X.X ±2'
X.XXX ±0.05	X.XX ±1'
UNITS:	mm

USE:	CUSTOMER
APPD:	Shaojinghe
CHKD:	Shaojinghe
DR:	Ryan

TITLE:		FPC Pitch0.5 H1.5 Front-Flip Conn. SMT Type	
PART NO.:		F0506AWR-**-F4M*1-*	
DWG NO.:		JKUN-GCKH-	
SCALE	1 : 1	SHEET	1 / 1